

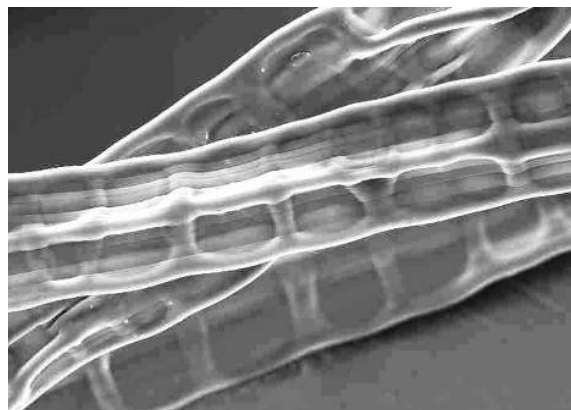
## Bramante – hollow viscose fibre

**Bramante** is a segmented hollow viscose fibre which is collapsed in the dry state and swells when wetted.

Bramante has an outstanding water absorption and retention capacity. Even under pressure, re-wetting is minimized as the water is firmly incorporated in the fibres' cavities.

Bramante is ideal for all applications which require high absorbency, e.g. for hygiene and medical applications as well as for absorbent textiles.

Its dye pickup is approximately 3 times higher than for standard viscose.



SEM image of Bramante

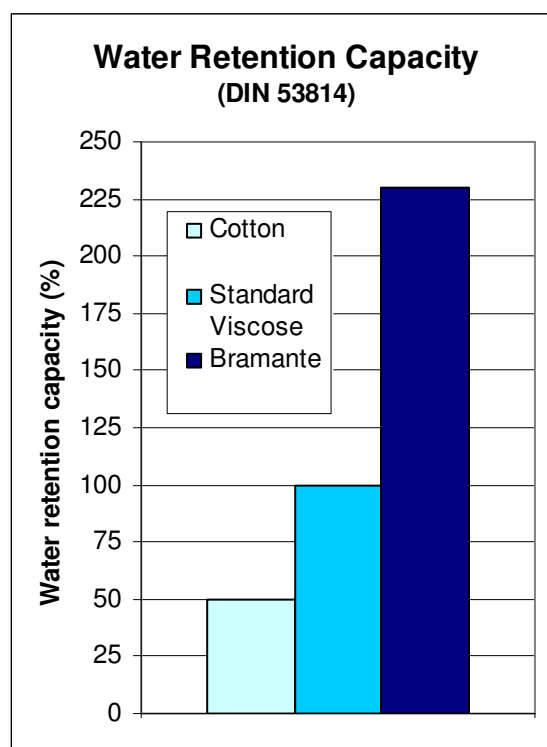
### Applications:

Bramante can be used in 100% or in blends with other fibres, such as viscose, cotton or synthetics for:

- Functional, moisture absorbing and regulating textiles and nonwovens
- Wound dressings
- Tampons
- Incontinence products
- Absorbent pads
- Wipes for household and personal care (wet / dry)

### Processing

Bramante can be processed on all common textile, nonwoven and wetlaid technologies



### Properties / Availability:

Tenacity (cN / tex)	16 – 18
Elongation at break (%)	20 – 25
Water retention (%)	220 – 360

Decitex	2.1, 3.3
Staple (mm)	40, 60 tow
Lustre	low

Other dtex / staple lengths are available on request.

For more information about our products please email to: [functionalfibres@kelheim-fibres.com](mailto:functionalfibres@kelheim-fibres.com) or call Germany +49-9441-99353. Please visit also our website [www.kelheim-fibres.com](http://www.kelheim-fibres.com) . 09/2011

Any data contained in this datasheet is for information purposes only. No guarantee of specific properties or fitness for purpose is stated or implied. Trademarks and patents are the property of Kelheim Fibres GmbH.